

Gel Logic 2200 PRO

- HIGH PERFORMANCE
- HIGH RESOLUTION
- LUMINESCENT IMAGING

The new **Gel Logic 2200 PRO** is a fully automated system that offers ease of use, sophistication, sensitivity and performance for the basic research community. The GL 2200 PRO is designed for imaging fluorescence, luminescence and colorimetric data in sample formats such as gels (DNA/Coomassie/Silver stain) membranes, western blots and 96 well plates.

Features include a cooled 2.2 megapixel grade 0 (0 defects) CCD, motorized 12.5 mm to 75 mm 6x zoom lens, true 16-bit data capture, virtual illumination controls, a rollout trans-illuminator, and newly designed white light table.

Carestream Molecular Imaging software (included with the system) features a variety of new, easy-to-use functionalities such as true autofocus and directed autoexposure that allow the user to capture perfectly exposed images in just a few clicks.

High resolution and innovative, automated controls make it easy to capture perfectly exposed gel and blot images every time.

- Cooled 2.2 megapixel scientific grade camera
- True 16-bit data capture
- Motorized 12.5 mm to 75 mm lens with 6x zoom
- Auto-focus and exposure control for easy illumination
- Unbeatable price/performance

Learn more. Call 1-877-747-4357, exp. code 7.
Outside the U.S. call +1-203-786-5658. Or visit us online at

→ mi.carestreamhealth.com



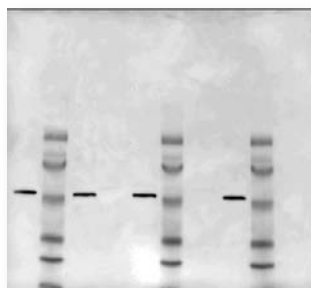
Carestream
Molecular Imaging

one source
for all your molecular imaging needs

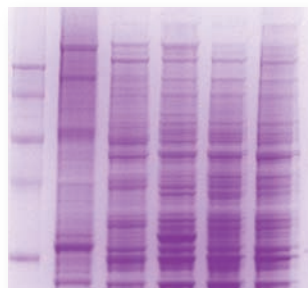
Gel Logic 2200 PRO

APPLICATIONS & PRODUCT SPECIFICATIONS

Ideal for a wide range of imaging applications



LUMINESCENT BLOT



PROTEIN GEL

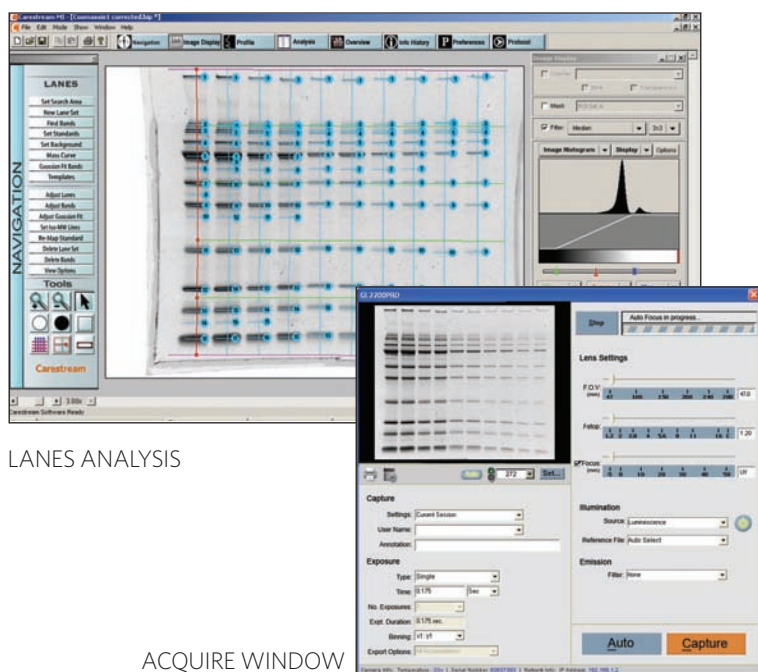


DNA GEL



BACTERIAL PLATE

Image Capture & Analysis Software



LANES ANALYSIS

ACQUIRE WINDOW

Carestream Molecular Imaging Software (included with the Gel Logic 2200 PRO) features a redesigned interface and a variety of new, easy-to-use functionalities such as true autofocusing and directed autoexposure that allow the user to capture perfectly exposed images in just a few clicks.

GL 2200 PRO Technical Specifications

CAMERA	
Type	Progressive scan CCD, Class O
CCD	1708 x 1280 pixels, cooled -29° C (absolute)
Lens	Motorized & automated with 12.5 to 75 mm zoom
ILLUMINATION	
Fluorescence	Trans-UV illumination standard
White Light	White Light trans and epi illumination standard
Epi-UV	254 nm, 306 nm, 370 nm optional
FILTERS	
Mounting	Motorized 6-position wheel, drop-in design
Standard	590 nm emission (Ethidium Bromide)
PERFORMANCE	
Field of View	Supports up to 21 x 28 cm
Dynamic Range	4 orders of magnitude
Data Acquisition	16-bit image capture
COMPUTER INTERFACE	Ethernet
DIMENSIONS	17" deep x 21.375" wide x 35.5" tall 43 cm x 54 cm x 90 cm
SOFTWARE	Carestream Molecular Imaging Software

Carestream Health, Inc.
4 Research Drive
Woodbridge, CT 06525

 mi.carestreamhealth.com

Carestream
Molecular Imaging

A division of  Carestream HEALTH

Carestream is a trademark of Carestream Health Inc. Carestream Molecular Imaging is a division of Carestream Health. © Carestream Health Inc. Printed in USA, February 2010