

Gel Logic 212 PRO

- HIGH PERFORMANCE
- HIGH RESOLUTION
- LOW COST

The new **Gel Logic 212 PRO** is a fully automated system that offers ease of use, sophistication, versatility and performance not typically seen on imaging systems aimed at the basic research community. The GL 212 PRO is ideal for imaging fluorescence or colorimetric data in sample formats such as gels (DNA/Coomassie/Silver stain) membranes, and 96 well plates.

Features include a 1.4 megapixel grade 0 (0 defects) CCD, motorized 8-48mm 6x zoom lens, true 12-bit data capture, virtual illumination controls, a rollout trans-illuminator, and newly designed white light table (optional).

Carestream Molecular Imaging software (included with the system) now features a variety of new, easy-to-use functionalities such as true autofocusing and directed autoexposure that allow the user to capture perfectly exposed images in just a few clicks.



High resolution and innovative, automated controls make it easy to capture perfectly exposed images every time.

- 1.4 megapixel scientific grade camera
- True 12-bit data capture
- Auto-focus and easy illumination
- Motorized 8-48mm lens with 6x zoom
- Unbeatable price/performance

Learn more. Call **1-877-747-4357**, exp. code 7.

Outside the U.S. call **+1-203-786-5657**. Or visit us online at

➔ mi.carestreamhealth.com

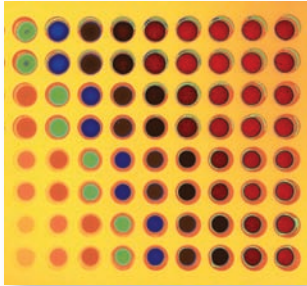
Carestream
Molecular Imaging

one source
for all your molecular imaging needs

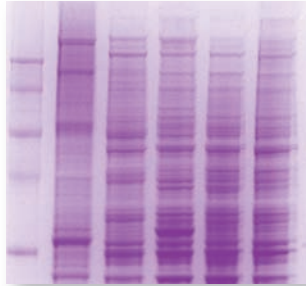
Gel Logic 212 PRO

APPLICATIONS & PRODUCT SPECIFICATIONS

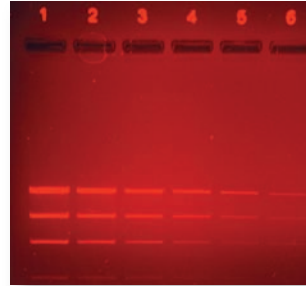
Ideal for a wide range of imaging applications



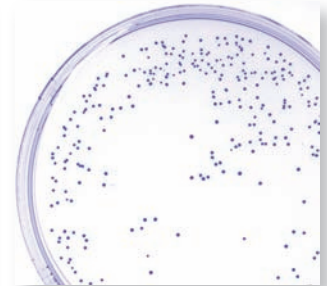
96 WELL PLATE



COOMASSIE

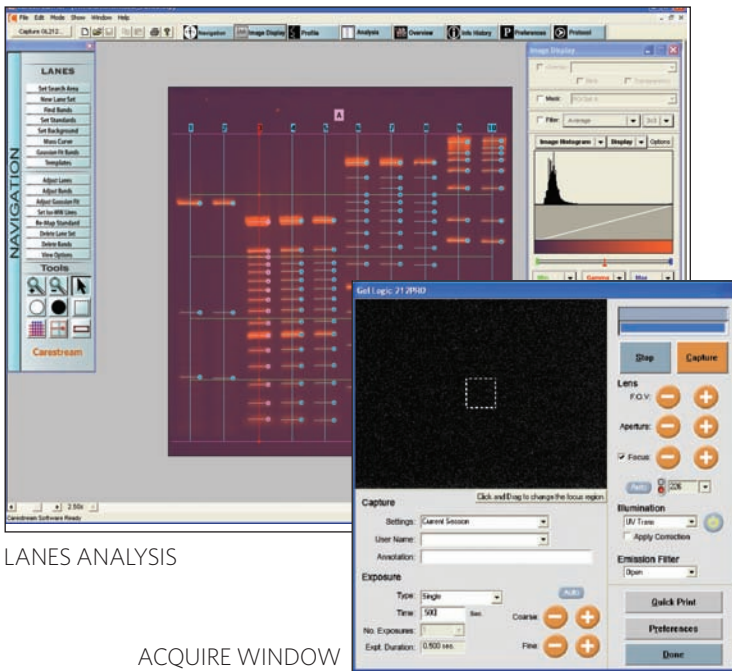


ETHIDIUM BROMIDE



BACTERIAL PLATE

Image Capture & Analysis Software



LANES ANALYSIS

ACQUIRE WINDOW

Carestream Molecular Imaging Software (included with the Gel Logic 212 PRO) features a redesigned interface and a variety of new, easy-to-use functionalities such as true auto-focusing and directed autoexposure that allow the user to capture perfectly exposed images in just a few clicks.

GL 212 PRO Technical Specifications	
CAMERA	
Type	Progressive scan CCD, Class O
CCD	1392 x 1032 pixels
Lens	Motorized & automated 6x zoom
ILLUMINATION	
Fluorescence	UV transillumination standard
White Light	White Light transilluminator, optional
Epi-UV	254nm, 306, 370 nm, optional
FILTERS	
Mounting	Motorized 6-position wheel, drop-in design
Standard	590 nm (Ethidium Bromide, Ruby Red, Texas Red, Ruby Orange)
PERFORMANCE	
Resolution	34 micron/pixel at full zoom
Field of View	Supports 19x25 cm down to 3.5x4.5 cm
Dynamic Range	>3.4 orders of magnitude
Data Acquisition	14-bit file accumulations
COMPUTER INTERFACE	IEEE 1394 6-pin 400 speed (FIREWIRE) PC & Macintosh compatible, Serial connection (PC), and Serial to USB for Macintosh.
SOFTWARE	Molecular Imaging Software

Carestream Health, Inc.
4 Science Park
New Haven, CT 06511



MarketLINK Scientific
919 Fraser Drive Unit 11
Burlington, ON
Canada L7L 4X8
Phone: 866-336-3313
Fax: 289-288-0122
www.marketlinkscientific.com

Carestream
Molecular Imaging

Carestream is a trademark of Carestream Health Inc. Carestream Molecular Imaging is a division of Carestream Health. © Carestream Health Inc. Printed in USA, April 2009

A division of Carestream HEALTH